



GALERIE SAINT-GERMAIN

→ *Quartier Saint-Germain, Paris 6e.*

Gallery of Parisian style very luminous of 80 m², located in a courtyard with a natural light point.

Located in the Passage Dauphine.

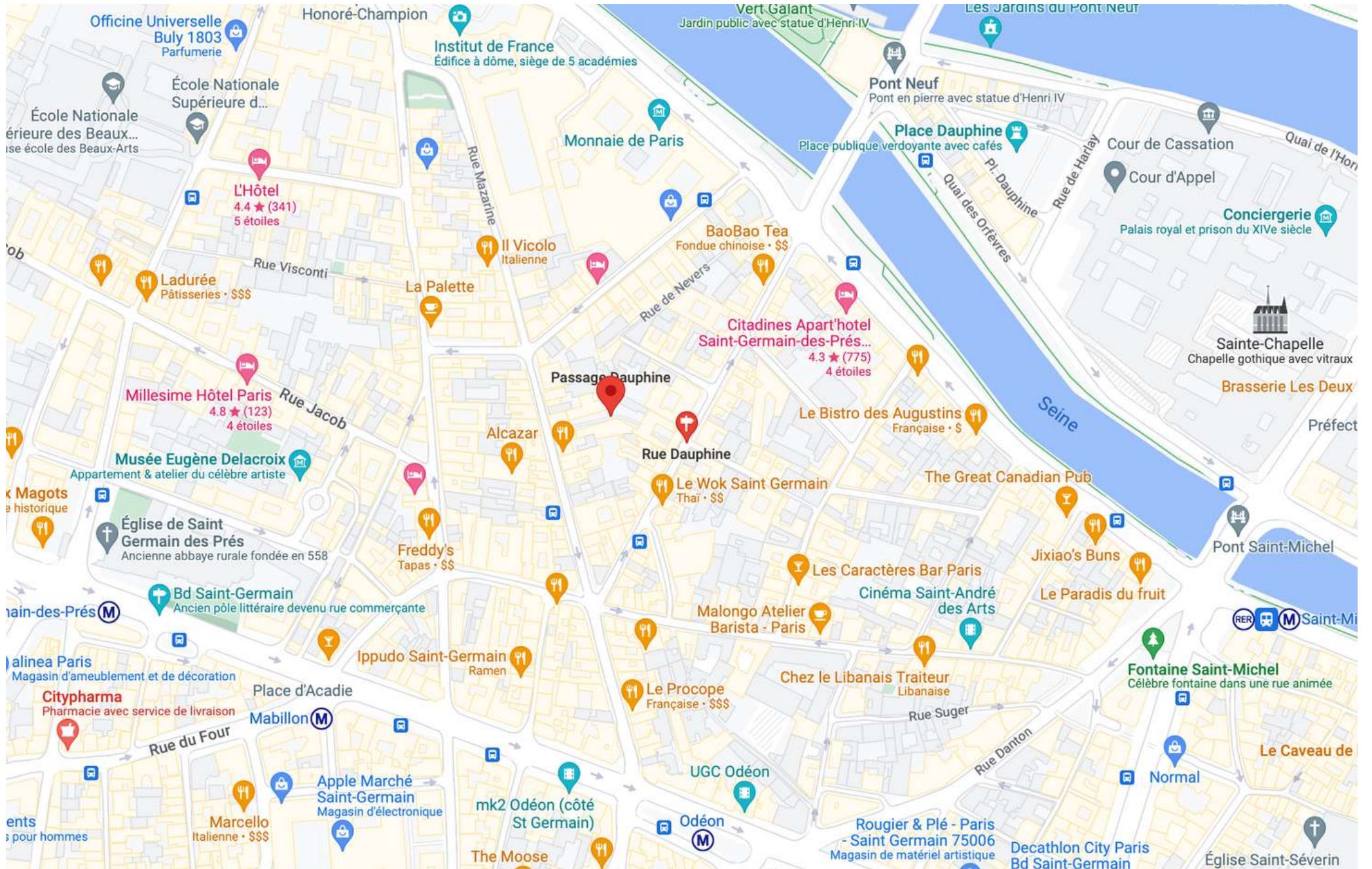


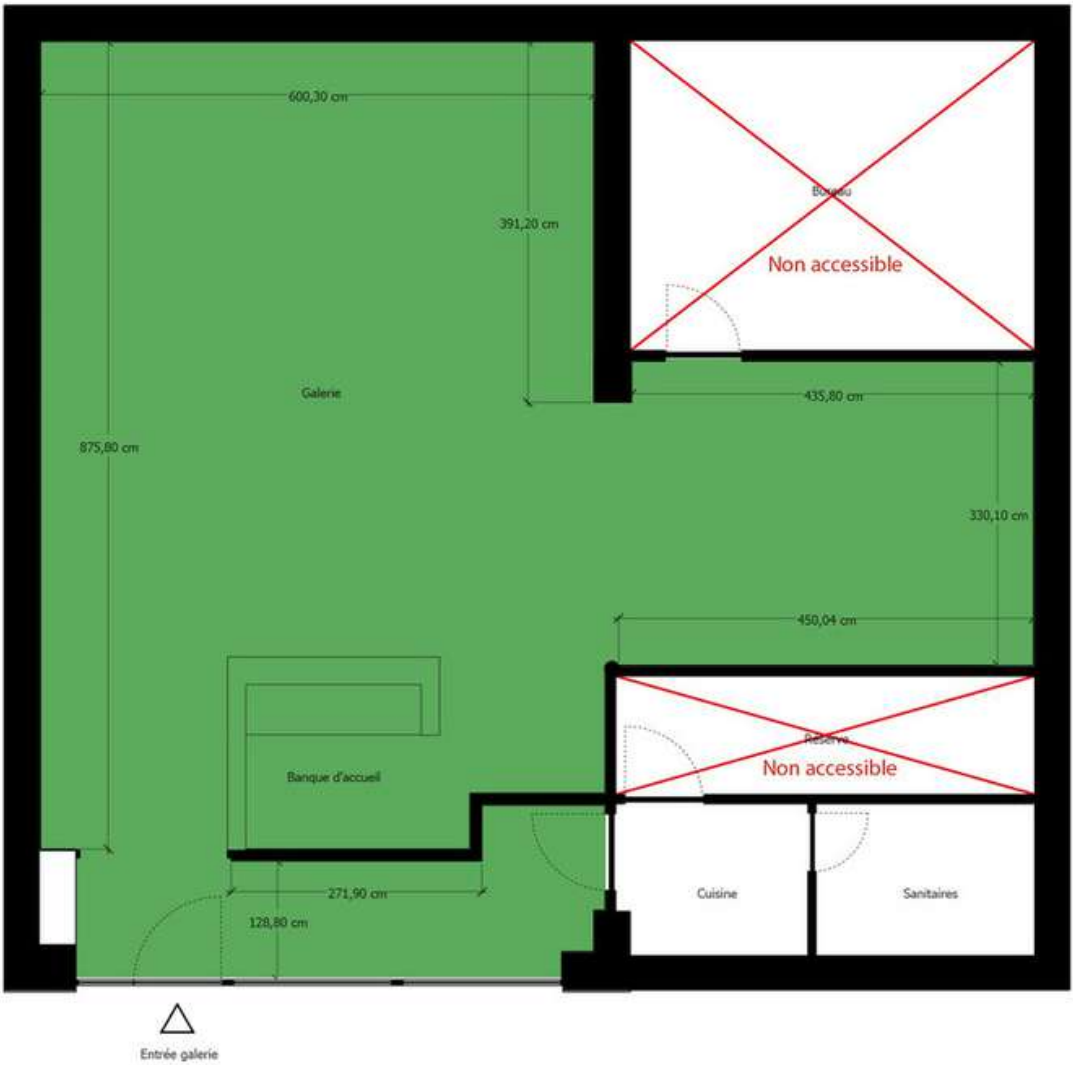


Very bright store due to its glass roof and its beautiful height under ceiling which bring a zenithal light on your exhibitions.









MIR Agency

Organization of showrooms for Fashion Week, project management, setting up of art & design exhibitions, unique places in Paris

Melissa Regan Agency
melissa@themragency.com
www.themragency.com

+33 6 70 40 04 67